

# Map our Possible Place

**This workshop is for groups to:**

- **Share knowledge of their place in past and present**
- **Explore how the Earth crisis affects this place**
- **Make a map to show the place in its best possible future**

**You'll need: a map of your area, paper & coloured pens, access to the internet...and at least 90 minutes of time.**



# Links for research & sharing



From CCI Eco-Capabilities project

<https://www.google.co.uk/maps/>  
<https://magic.defra.gov.uk/>  
<https://www.geograph.org.uk/>  
<https://transitionnetwork.org/stories/>  
<https://atlasofthefuture.org/>  
<https://NBNatlas.org/>

Share finished maps with the  
hashtag #ImagineFutures and  
tag @ClimateMuseumUK

# First, what is the Earth crisis?

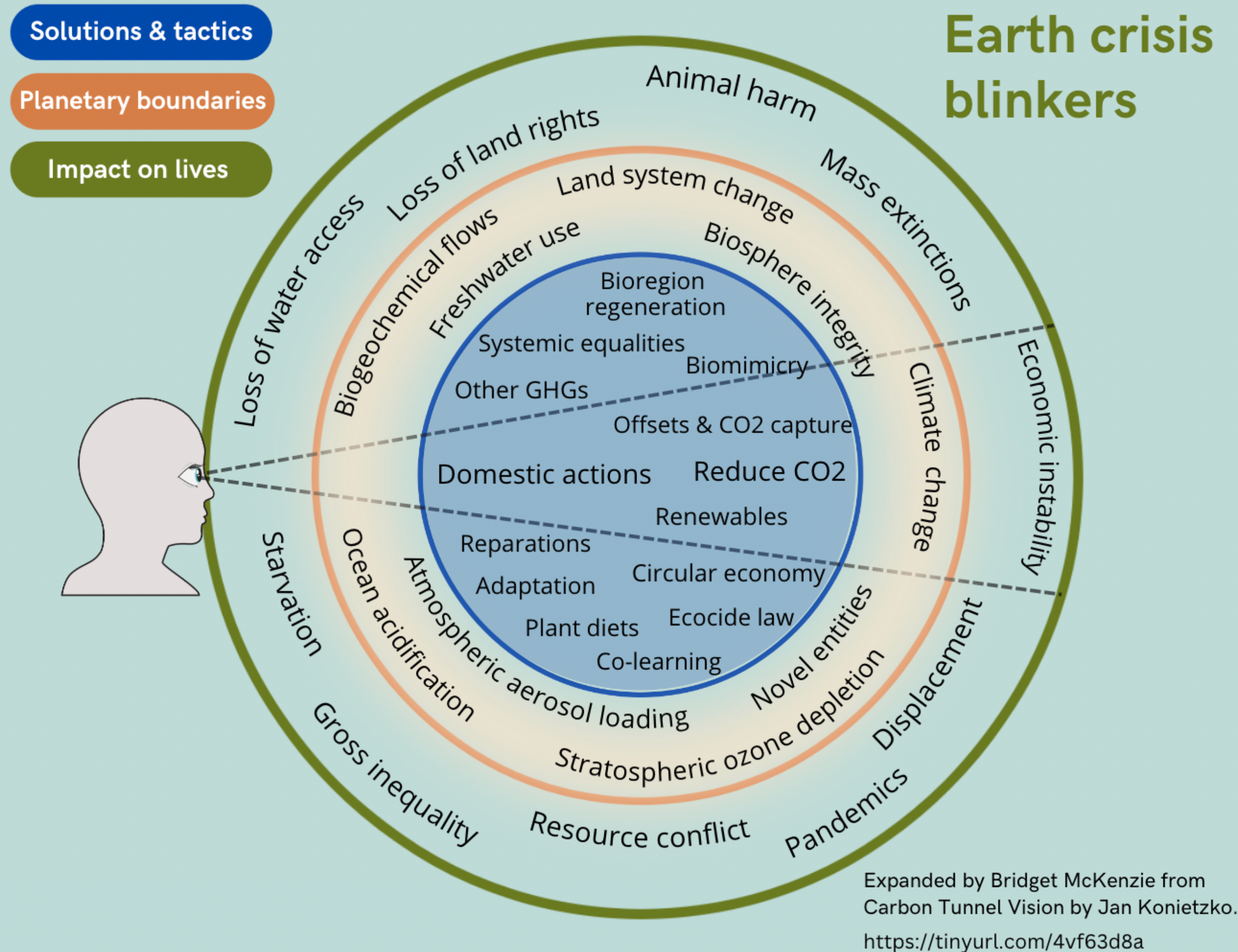
- What comes to mind?
- How does it affect this place?





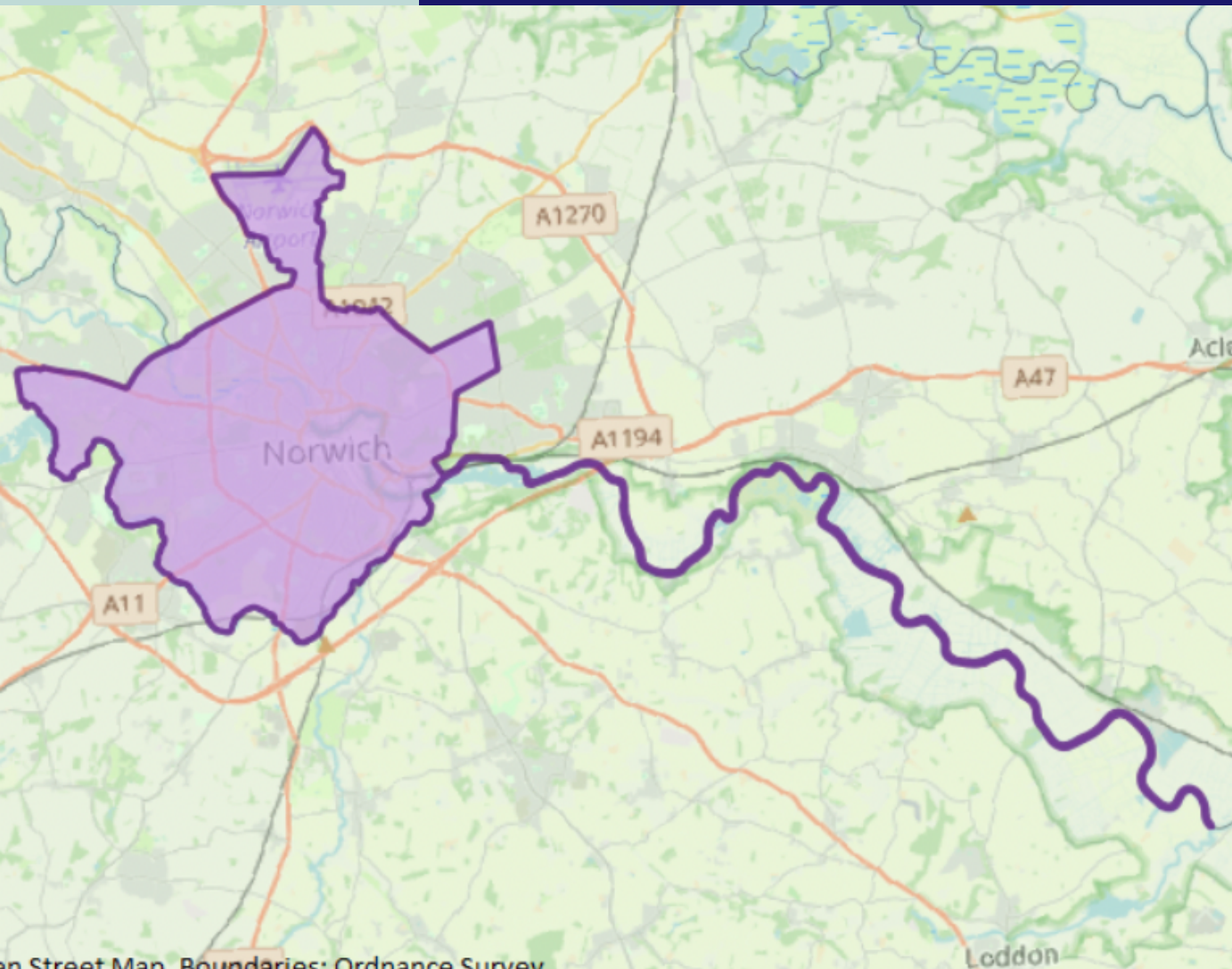
# Thinking bigger about the Earth crisis

What and who do we forget?





# What IS the place we're going to map?



Where shall we draw its boundary,  
for the sake of this exercise?

Consider that:

- all edges are uncertain
- this place is nested in other places  
and systems.

For example, the official boundary of Norwich  
stretches out for miles along the river Yare.



# What is your mental map of our place?

Take 5 minutes to draw our place

There's no right or wrong, just  
what's top of mind

Then, all compare our maps

What do we see in common?



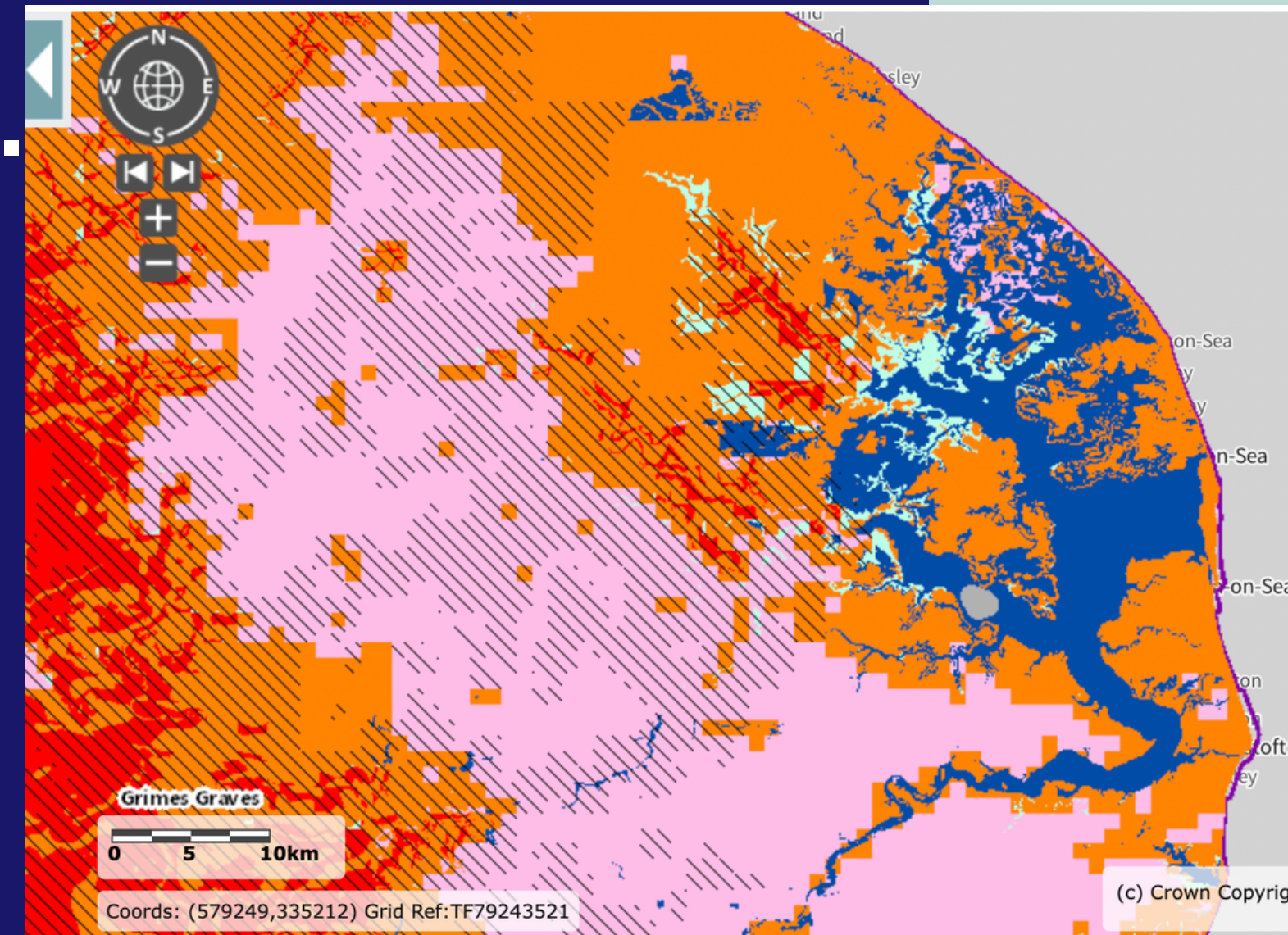


# Taking a bird's eye view

## Looking at an accurate map now....

### What's here from deep time and nature outside of human actions?

### What's here because of humans?



You could look at other, technical maps e.g. this, showing water vulnerability (on MAGIC DEFRA)



# What is the essence of this place?

Is there a special mix of factors?

What do people visit for?

What's especially offered, grown or made here?





# And what stops the good in this place?



What is stopping its potential to be a safe, just and peaceful place?

The picture is roof insulation in a shop window. It's piled in the wrong place. Think about what's stuck and what's flowing in the systems of this place.



# Let's make a Possible Place map

If systems worked well, what would our place look like? What would we see in particular areas?

What can we create here to increase the flow of good, so that it's a safe, healthy and just place?

*Put post-its on a big print out of a map, or draw & write on a big sheet of paper.*



# This workshop was created by...



## Climate Museum UK

*An experimental museum that generates and curates creative responses to the Earth crisis.*

Web: [climatemuseumuk.org](http://climatemuseumuk.org)

Email: [climatemuseumuk@gmail.com](mailto:climatemuseumuk@gmail.com)

Twitter [@climatemuseumuk](https://twitter.com/climatemuseumuk)

We aim to help people:

- plan for the *impacts* of the Earth crisis in their places
- imagine ways to *live well* in their place, despite its impacts
- tackle the *causes* of the Earth crisis too...