

IMAGINE FUTURES

Play future roles and create ideas
to save nature and the climate



*"The future must enter
you a long time before it
happens..."*

Rob Hopkins

Creative workshop for young people led by Climate Museum UK, supported by Norfolk & Norwich Festival

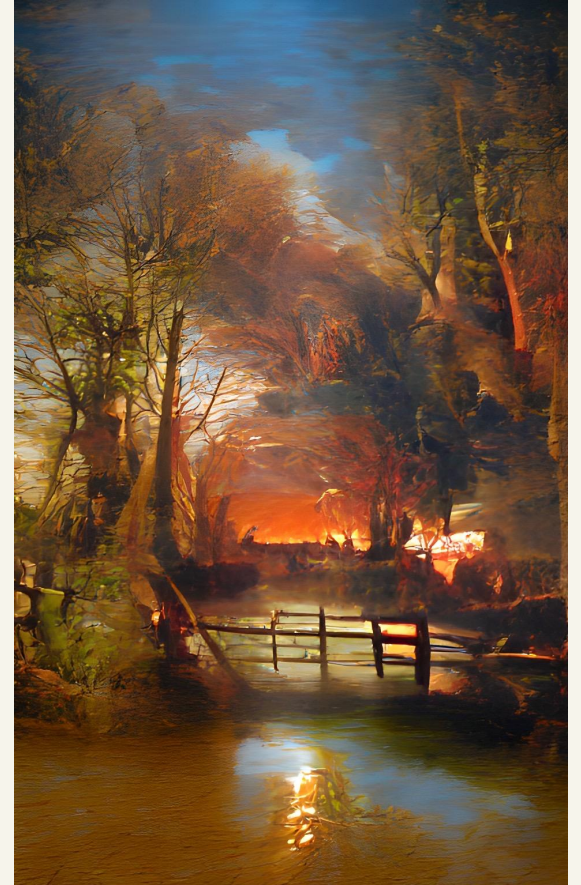
The plan for today

- Imagine the future if we do nothing.
- Call for help from time-travellers from the future.
- Join them to create ideas to help. (Go where you want, but try to visit all five.)
- Sharing of your ideas for each role.

Imagine the Future: without our help



**What if we do
nothing to
protect places
like Mousehold
Heath and the
Wensum Valley?
And nature as a
whole?**



Environment experts gave evidence

Helen Baczkowska - Norfolk Wildlife Trust

Ella Firebrace



Helen Baczkowska NWT



Genevieve Rudd



Ella Firebrace



Nick Brooks



will stewart

Nick Brooks

Will Stewart - Mousehold Heath

A series of vertical stripes of varying widths and colors, transitioning from light blue on the left to dark red on the right, representing a temperature gradient.

**The climate is
warming**

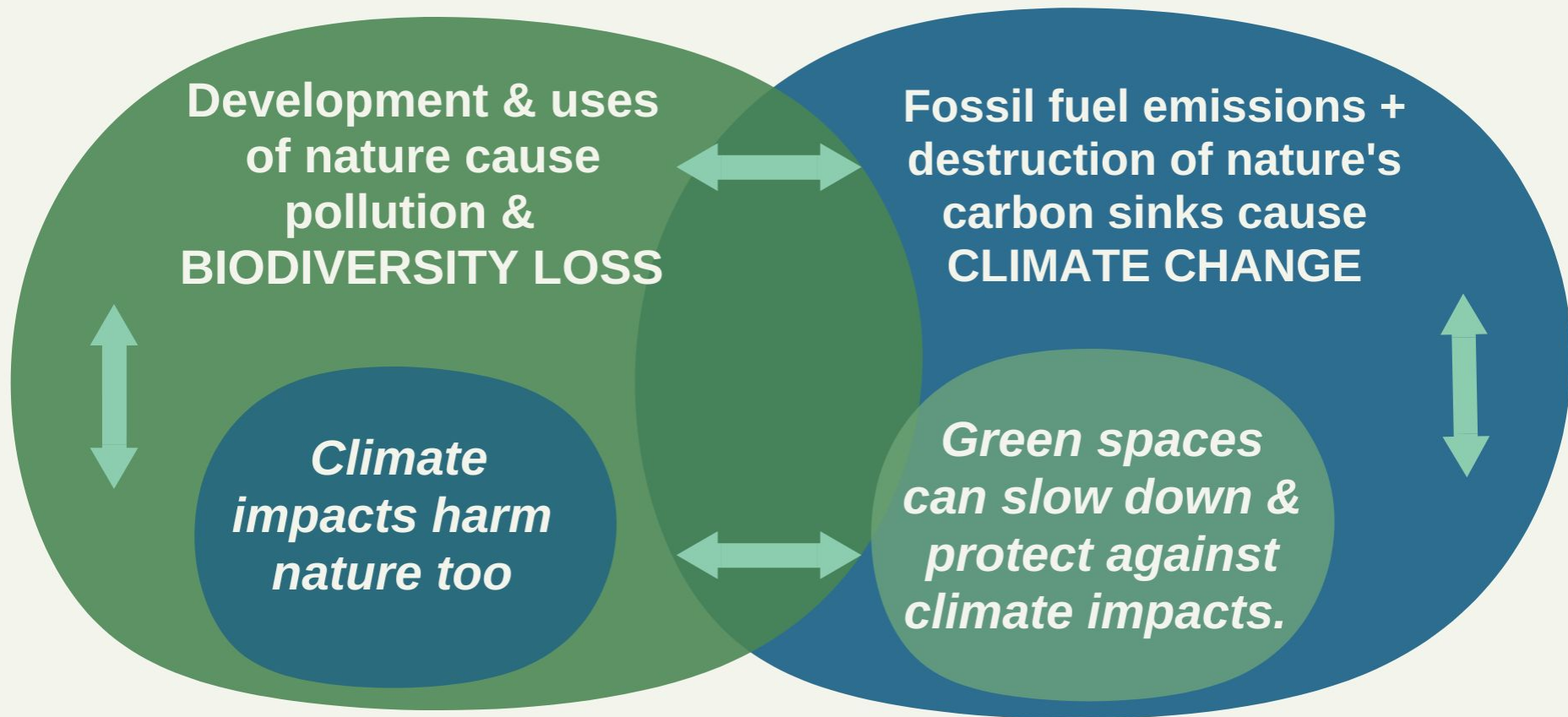
Global warming and biodiversity loss 1970 – 2018

GlobalWarming Stripes #showyourstripes. Data Source UK Met Office CC BY 4.0
From biodiversitystripes.info Data: LPI 2022. Living Planet Index <http://stats.livingplanetindex.org/>

A series of vertical stripes of varying widths and colors, transitioning from bright green on the left to light grey on the right, representing a decline in biodiversity.

Biodiversity is declining

Climate and Biodiversity are not separate issues



**Link Road
planned to cut
across Wensum
valley.**

**Viaduct over the
Chalk Stream &
marshes.**



**Harm to habitat of
protected species, like
Barbastelle bats. Loss
of some green space.
Then, pollution, noise
& shade from the
road.**



**And more road =
more climate
emissions**

**Mousehold Heath
is harmed by
drought & heat
from climate
change**



**Food for
animals at
wrong times &
less of it.**

**Trees weaken.
Leaves fall later.
Heavier branches
break in bigger
storms.**



**Fires break out
in dry soil &
gorse bushes. 33
fires in summer
2018 & some in
2022. Wildlife
harmed. Can't
easily return as
the heath is an
'island'.**



**Ponds dry up.
Less water for
animals.**

Ecosystems are already stressed by climate change. New roads & housing will add more stresses on top.

Symbiosis between birds & caterpillars. Migration & hibernation timings more out of sync. Losses impact on other species.

Wetlands allow floodwater to create wetter habitat & to avoid damage to buildings.

Climate change means rising sea levels and saltier rivers & wetlands



People are
happier &
healthier with
access to
nature.

Paddle boarders
on the Wensum

And with a
safe stable
climate!



"We need to stop thinking about Nature as something that we can just move out of the way. What impacts on nature will ultimately impact us." Helen Baczkowska

Mousehold Heath
allotments

Meet the future people



Wild Beings Translator

- + Taps into plant, fungi & animal communication
- + Helps us notice their needs and bring them into our decision-making
- + Brings ideas from nature to inspire us
- + Bio-empathy is a main feature



Movement Magician

- + Works with people to organise movements
- + Knows what matters to ordinary people
- + Inspires people to collaborate and turn up
- + Moves resources to where they are needed
- + Energy is a main feature



Planetary Activist

- + Speaks truth to power, in creative and impactful ways
- + Influences politicians and companies to stop harm and to restore the natural world
- + Voice is a main feature, but they follow their voice with actions



Art by @megmckenzie.art Insta

Water Flow Keeper

- + Works to ensure that water goes where it's needed, and not where it makes trouble
- + Stops water being polluted
- + Helps plants to protect against drought & fire
- + Logic is a main feature, but they do care for life



Healthy Lives Weaver

- + Works for the Planetary Health Service, for environmental health as much as human health
- + Helps people to get good food, green space, healthy transport, social fun & meaningful work
- + Heart is a main feature



Get creative

Tips for unlocking
your imagination and
making change
where it matters

Artwork by Kimberley Foster



Be Possitopian: Open your imagination to all the possibilities

To be possitopian is
to expand the cone of
possible futures

DYSTOPIAN

UTOPIAN

Fixed positions of
dystopia or utopia
narrow the cone of
possible futures.

Expand the
imagination. Weave
together the worst
case scenarios with
dreams of a thriving
world.

BE POSSITOPIAN

A techno-
utopian future
view is creating
a dystopian
reality

Solutions can help both people AND planet

Doughnut Economics: idea by Kate Raworth. All can live well within planet's limits.

Image from 2040 film by Damon Gameau <https://whatsyour2040.com/> |



Ask “What if...?”

People in Lieges asked “What if all our food was grown around the City?”

**bird song drowned out
the sound of the traffic...**



Mash up ideas

AuREUS - colourful solar glass with waste fruit & veg. Designed by teenager, Carvey Ehren Maigne





Idea in your head...

**How it looks when
you try to show it...**

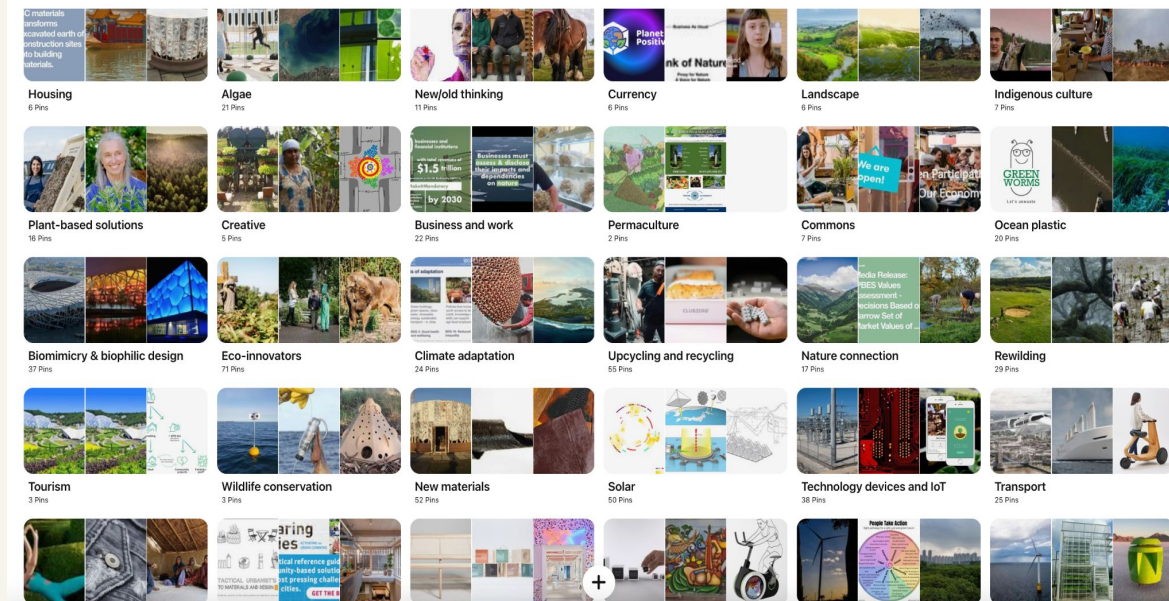
**But it doesn't matter.
Find a new idea or
keep refining the
good ones.**

You can use this ideas bank

<https://tinyurl.com/2p7sc425>



Scan me!



People Take Action

Eight pathways for a safe, just and green future



@climatemuseumuk

#PeopleTakeAction

Climate Museum UK

- A **team of creatives** across the UK, we support and collect responses to the Earth crisis.
- We organise **activations** to help people play, make, and talk about it.
- We **open imaginations** to possible futures.
- We **build skills** to engage other people with climate and nature.

